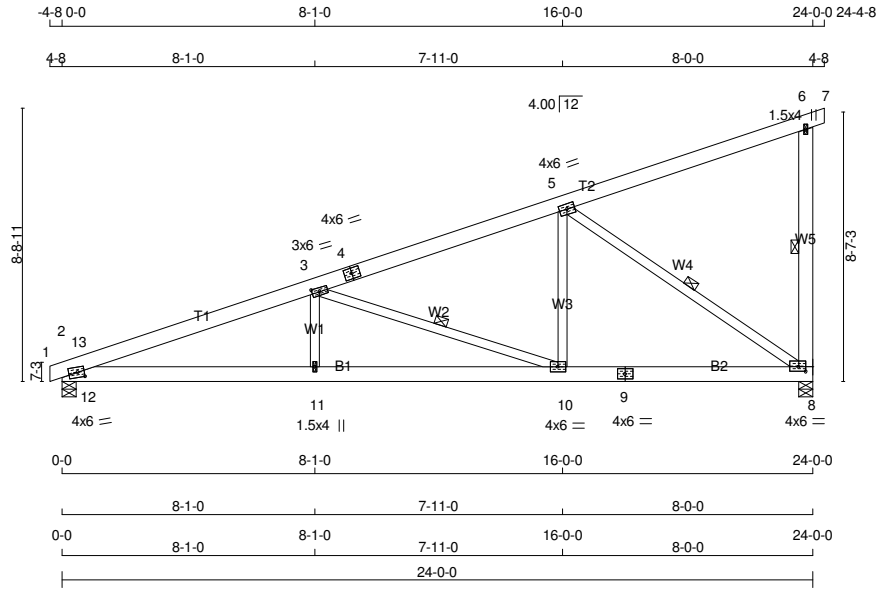


JOB NAME <b>J18-1312-A</b>	TRUSS NAME <b>T24</b>	QUANTITY <b>20</b>	PLY <b>1</b>	JOB DESC. TRUSS DESC.	DRWG NO.
-------------------------------	--------------------------	-----------------------	-----------------	--------------------------	----------

Structural Truss Systems, Fort Macleod, Eric Vandenberg

Version 8.210 S Aug 12 2018 MITek Industries, Inc. Wed Sep 5 15:00:43 2018 Page 1

ID:9anoLDKgnGjsU6BtMGDxX8yid4F-IEV49z8kVeqeUxj5PJ1jpBhpcsoOfAFSKvc31ygd2



Scale = 1:73.6

TOTAL WEIGHT = 20 X 132 = 2631 lb

**LUMBER**

N. L. G. A. RULES

CHORDS	SIZE	DRY	LUMBER	DESCR.
1 - 4	2x6	DRY	No.2	SPF
4 - 7	2x6	DRY	No.2	SPF
8 - 6	2x6	DRY	No.2	SPF
2 - 9	2x6	DRY	No.2	SPF
9 - 8	2x6	DRY	No.2	SPF

ALL WEBS 2x4 DRY No.2 SPF  
 DRY: SEASONED LUMBER.

**PLATES (table is in inches)**

JT TYPE	PLATES	W	LEN	Y	X
2	TMB1-m	MT20	4.0	6.0	2.00 2.50
3	TMWW-t	MT20	3.0	6.0	1.50 2.75
4	TS-t	MT20	4.0	6.0	
5	TMWW-t	MT20	4.0	6.0	
6	TMV+p	MT20	1.5	4.0	
8	BMWW1-t	MT20	4.0	6.0	1.75 2.75
9	BS-t	MT20	4.0	6.0	
10	BMWW-t	MT20	4.0	6.0	
11	BMW+w	MT20	1.5	4.0	

**DIMENSIONS, SUPPORTS AND LOADINGS SPECIFIED BY FABRICATOR TO BE VERIFIED BY BUILDING DESIGNER**

**BEARINGS**

JT	FACTORED GROSS REACTION		MAXIMUM FACTORED GROSS REACTION		INPUT BRG		REQRD BRG	
	VERT	HORZ	DOWN	HORZ	UPLIFT	IN-SX	IN-SX	IN-SX
8	1758	0	1758	0	0	5-8	5-8	5-8
2	1758	0	1758	0	0	5-8	5-8	5-8

**UNFACTORED REACTIONS**

JT	1ST CASE COMBINED	MAX/MIN COMPONENT REACTIONS		PERM. LIVE	WIND	DEAD	SOIL
		SNOW	LIVE				
8	1221	928 / 0	0 / 0	0 / 0	0 / 0	292 / 0	0 / 0
2	1221	928 / 0	0 / 0	0 / 0	0 / 0	292 / 0	0 / 0

BEARING MATERIAL TO BE SPF NO.2 OR BETTER AT JOINT(S) 8, 2

**BRACING**  
 TOP CHORD TO BE SHEATHED OR MAX. PURLIN SPACING = 4.17 FT.  
 MAX. UNBRACED BOTTOM CHORD LENGTH = 10.00 FT OR RIGID CEILING DIRECTLY APPLIED.

ALL PITCH BREAKS AND PERIMETER CORNER JOINTS MUST BE LATERALLY RESTRAINED.

1 - 2x4 DRY SPF No.2 LATERAL BRACE(S) AT 1/2 LENGTH OF 6-8, 3-10. DBS = 20-0-0. CBF = 212 LBS.  
 1 - 2x4 DRY SPF No.2 LATERAL BRACE(S) AT 1/2 LENGTH OF 5-8. DBS = 16-0-0. CBF = 222 LBS.

DBS = DIAGONAL BRACE SPACING (MAX). CBF = CUMULATIVE BRACING FORCE (PER BRACE). FASTEN LATERAL BRACE(S) USING (0.122"x3") SPIRAL NAILS : 1 NAIL FOR 2x3 BRACE(S), 2 FOR 1x4, 2x4, 2x5, 3 FOR 2x6, 4 FOR 2x8, 5 FOR 2x10, AND 6 FOR 2x12.

END VERTICAL(S) MUST BE SHEATHED OR HAVE BRACES AS INDICATED IN THE MAX. UNBRACED LENGTH COLUMN OF THE TABLE BELOW

**LOADING**  
 TOTAL LOAD CASES: (4)

CHORDS				WEBS			
MEMB.	MAX. FACTORED FORCE (LBS)	FACTORED VERT. LOAD (PLF)	FACTORED LC1 MAX (LC)	MAX. UNBRAC LENGTH	MEMB.	MAX. FACTORED FORCE (LBS)	MAX. UNBRAC LENGTH
FR-TO	FR-TO	FR-TO	FR-TO	FR-TO	FR-TO	FR-TO	FR-TO
1-2	0 / 1	-124.3	-124.3 0.01 (1)	10.00	11-3	0 / 156	0.04 (4)
2-13	-3690 / 0	-124.3	-124.3 0.20 (1)	4.33	3-10	-1695 / 0	0.57 (1)
13-3	-3602 / 0	-124.3	-124.3 0.38 (1)	4.17	10-5	0 / 729	0.12 (1)
3-4	-1919 / 0	-124.3	-124.3 0.46 (1)	5.21	5-8	-2219 / 0	0.96 (1)
4-5	-1919 / 0	-124.3	-124.3 0.46 (1)	5.21	12-13	-214 / 90	0.00 (1)
5-6	-33 / 0	-124.3	-124.3 0.44 (1)	6.25			
6-7	-9 / 0	-124.3	-124.3 0.01 (1)	10.00			
8-6	-449 / 0	0.0	0.0 0.09 (1)	6.25			
2-12	0 / 3428	-17.5	-17.5 0.54 (1)	10.00			
12-11	0 / 3428	-17.5	-17.5 0.56 (1)	10.00			
11-10	0 / 3428	-17.5	-17.5 0.47 (1)	10.00			
10-9	0 / 1832	-17.5	-17.5 0.28 (1)	10.00			
9-8	0 / 1832	-17.5	-17.5 0.28 (1)	10.00			

**DESIGN CRITERIA**

**SPECIFIED LOADS:**  
 TOP CH. LL = 37.3 PSF  
 DL = 5.0 PSF  
 BOT CH. LL = 0.0 PSF  
 DL = 7.0 PSF  
 TOTAL LOAD = 49.3 PSF

**SPACING = 24.0 IN.CC**

THIS TRUSS IS DESIGNED FOR RESIDENTIAL OR SMALL BUILDING REQUIREMENTS OF PART 9, NBC 2010

THIS DESIGN COMPLIES WITH:  
 - PART 9 OF OBC 2012, BCBC 2012, ABC 2014  
 - CSA 086-09  
 - TPIC 2011

(55% OF 56.4 P.S.F. G.S.L. PLUS 6.3 P.S.F. RAIN LOAD) EQUALS 37.3 P.S.F. SPECIFIED ROOF LIVE LOAD

ALLOWABLE DEFL.(LL) = L/360 (0.80")  
 CALCULATED VERT. DEFL.(LL) = L/999 (0.13")  
 ALLOWABLE DEFL.(TL) = L/360 (0.80")  
 CALCULATED VERT. DEFL.(TL) = L/999 (0.21")

CSI: TC=0.46/1.00 (3-5:1) , BC=0.56/1.00 (11-12:1) ,  
 WB=0.96/1.00 (5-8:1) , SSI=0.34/1.00 (5-6:1)

DOL LUMBER=1.00 NAIL=1.00 LS BEND=1.10 COMP=1.10  
 SHEAR=1.10 TENS= 1.10

COMPANION LIVE LOAD FACTOR = 0.50

TRUSS PLATE MANUFACTURER IS NOT RESPONSIBLE FOR QUALITY CONTROL IN THE TRUSS MANUFACTURING PLANT .

**NAIL VALUES**

PLATE	GRIP(DRY)	SHEAR (PSI)	SECTION (PLI)
MT20	618	354	1667 822 2284 1656

PLATE PLACEMENT TOL. = 0.250 inches

PLATE ROTATION TOL. = 5.0 Deg.

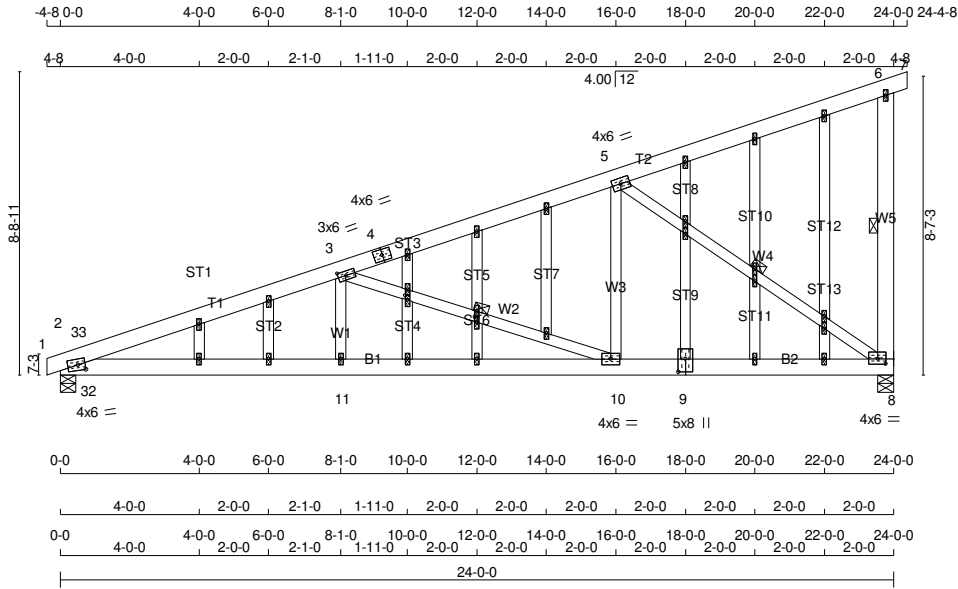
JSI GRIP= 0.89 (10) (INPUT = 0.90)  
 JSI METAL= 0.87 (2) (INPUT = 1.00)

JOB NAME <b>J18-1312-A</b>	TRUSS NAME <b>T24-GE</b>	QUANTITY <b>2</b>	PLY <b>1</b>	JOB DESC. TRUSS DESC.	DRWG NO.
-------------------------------	-----------------------------	----------------------	-----------------	--------------------------	----------

Structural Truss Systems, Fort Macleod, Eric Vandenberg

Version 8.210 S Aug 12 2018 MITek Industries, Inc. Wed Sep 5 15:00:45 2018 Page 1

ID:9anoLDKqNGisU6BTMGDX8yid4F-hcdrafA?1r4ato55CqMVP/EH16cYGsZfyveh08wgydu0



Scale = 1:66.3

TOTAL WEIGHT = 2 X 167 = 335 lb

**LUMBER**

N. L. G. A. RULES

CHORDS	SIZE	LUMBER	DESCR.
1 - 4	2x6	DRY	No.2
4 - 7	2x6	DRY	No.2
8 - 6	2x6	DRY	No.2
2 - 9	2x6	DRY	No.2
9 - 8	2x6	DRY	No.2

ALL WEBS	SIZE	LUMBER	DESCR.
ALL WEBS	2x4	DRY	No.2
ALL GABLE WEBS	2x4	DRY	No.2

DRY: SEASONED LUMBER.

GABLE STUDS SPACED AT 2'-0" O.C.

**DIMENSIONS, SUPPORTS AND LOADINGS SPECIFIED BY FABRICATOR TO BE VERIFIED BY BUILDING DESIGNER**

**BEARINGS**

JT	FACTORED GROSS REACTION		MAXIMUM FACTORED GROSS REACTION		INPUT BRG	REQRD BRG
	VERT	HORZ	DOWN	HORZ		
8	1758	0	1758	0	5-8	5-8
2	1758	0	1758	0	5-8	5-8

**UNFACTORED REACTIONS**

JT	1ST CASE COMBINED	MAX./MIN. COMPONENT REACTIONS					
		SNOW	LIVE	PERM.LIVE	WIND	DEAD	SOIL
8	1221	928 / 0	0 / 0	0 / 0	0 / 0	292 / 0	0 / 0
2	1221	928 / 0	0 / 0	0 / 0	0 / 0	292 / 0	0 / 0

BEARING MATERIAL TO BE SPF NO.2 OR BETTER AT JOINT(S) 8, 2

**BRACING**

TOP CHORD TO BE SHEATHED OR MAX. PURLIN SPACING = 4.17 FT.  
MAX. UNBRACED BOTTOM CHORD LENGTH = 10.00 FT OR RIGID CEILING DIRECTLY APPLIED.

ALL PITCH BREAKS AND PERIMETER CORNER JOINTS MUST BE LATERALLY RESTRAINED.

1 - 2x4 DRY SPF No.2 LATERAL BRACE(S) AT 1/2 LENGTH OF 6-8, 3-10. DBS = 20'-0" . CBF = 212 LBS.  
1 - 2x4 DRY SPF No.2 LATERAL BRACE(S) AT 1/2 LENGTH OF 5-8. DBS = 16'-0" . CBF = 222 LBS.

DBS = DIAGONAL BRACE SPACING (MAX), CBF = CUMULATIVE BRACING FORCE (PER BRACE), FASTEN LATERAL BRACE(S) USING (0.122"x3") SPIRAL NAILS : 1 NAIL FOR 2x3 BRACE(S), 2 FOR 1x4, 2x4, 2x5, 3 FOR 2x6, 4 FOR 2x8, 5 FOR 2x10, AND 6 FOR 2x12.

END VERTICAL(S) MUST BE SHEATHED OR HAVE BRACES AS INDICATED IN THE MAX. UNBRACED LENGTH COLUMN OF THE TABLE BELOW

**LOADING**

TOTAL LOAD CASES: (4)

CHORDS				WEBS				
MEMB.	FR-TO	FACTORED		MAX. UNBRAC LENGTH	MEMB.	FACTORED		
		FORCE (LBS)	VERT. LOAD (PLF)			FORCE (LBS)	MAX. CSI (LC)	
1-2	0 / 1	-124.3	-124.3	0.01 (1)	10.00	11-3	0 / 156	0.04 (4)
2-33	-3690 / 0	-124.3	-124.3	0.20 (1)	4.33	3-10	-1695 / 0	0.57 (1)
33-3	-3602 / 0	-124.3	-124.3	0.38 (1)	4.17	10-5	0 / 729	0.12 (1)
3-4	-1919 / 0	-124.3	-124.3	0.46 (1)	5.21	5-8	-2219 / 0	0.96 (1)
4-5	-1919 / 0	-124.3	-124.3	0.46 (1)	5.21	32-33	-214 / 90	0.00 (1)
5-6	-33 / 0	-124.3	-124.3	0.44 (1)	6.25			
6-7	-9 / 0	-124.3	-124.3	0.01 (1)	10.00			
8-6	-449 / 0	0.0	0.0	0.09 (1)	6.25			
2-32	0 / 3428	-17.5	-17.5	0.54 (1)	10.00			
32-11	0 / 3428	-17.5	-17.5	0.56 (1)	10.00			
11-10	0 / 3428	-17.5	-17.5	0.47 (1)	10.00			
10-9	0 / 1832	-17.5	-17.5	0.28 (1)	10.00			
9-8	0 / 1832	-17.5	-17.5	0.28 (1)	10.00			

**DESIGN CRITERIA**

**SPECIFIED LOADS:**

TOP CH. LL = 37.3 PSF  
DL = 5.0 PSF

BOT CH. LL = 0.0 PSF  
DL = 7.0 PSF

TOTAL LOAD = 49.3 PSF

**SPACING = 24.0 IN.CC**

THIS TRUSS IS DESIGNED FOR RESIDENTIAL OR SMALL BUILDING REQUIREMENTS OF PART 9, NBCC 2010

THIS DESIGN COMPLIES WITH:  
- PART 9 OF OBC 2012, BCBC 2012, ABC 2014  
- CSA 086-09  
- TPIC 2011

(55% OF 56.4 P.S.F. G.S.L. PLUS 6.3 P.S.F. RAIN LOAD) EQUALS 37.3 P.S.F. SPECIFIED ROOF LIVE LOAD

ALLOWABLE DEFL.(LL) = L/360 (0.80")  
CALCULATED VERT. DEFL.(LL) = L/999 (0.13")  
ALLOWABLE DEFL.(TL) = L/360 (0.80")  
CALCULATED VERT. DEFL.(TL) = L/999 (0.21")

CSI: TC=0.46/1.00 (3-5:1) , BC=0.56/1.00 (11-32:1) , WB=0.96/1.00 (5-8:1) , SSI=0.34/1.00 (5-6:1)

DOL LUMBER=1.00 NAIL=1.00 LS BEND=1.10 COMP=1.10 SHEAR=1.10 TENS=1.10

COMPANION LIVE LOAD FACTOR = 0.50

TRUSS PLATE MANUFACTURER IS NOT RESPONSIBLE FOR QUALITY CONTROL IN THE TRUSS MANUFACTURING PLANT .

**NAIL VALUES**

PLATE	GRIP(DRY)	SHEAR (PSI)	SECTION (PLI)
MT20	618	354	1667
	822	2284	1656

PLATE PLACEMENT TOL. = 0.250 inches

PLATE ROTATION TOL. = 5.0 Deg.

JSI GRIP= 0.89 (10) (INPUT = 0.90)  
JSI METAL= 0.87 (2) (INPUT = 1.00)